

Hiking Guide

Easy, Moderate, or Strenuous

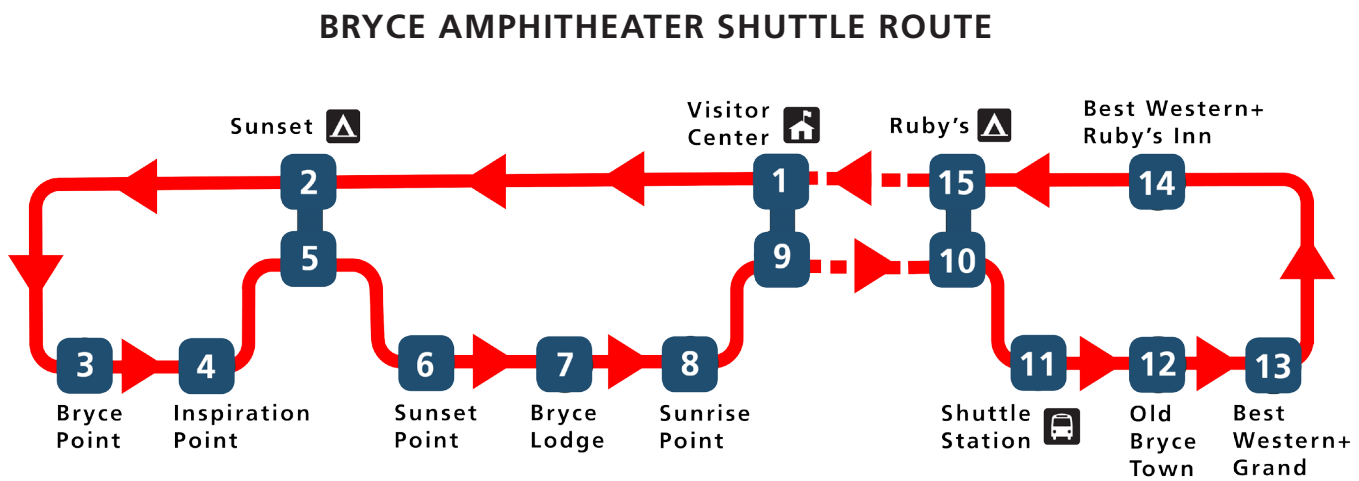
TRAIL NAME	DISTANCE	ELEV (cumulative)	DESCRIPTION
Mossy Cave North end of park, 4 mi east on Hwy 12	0.8 mi 1.3 km 1 hour	200 feet / 61 meters	Streamside walk up to a mossy grotto that fills with spectacular icicles in winter, and dripping mosses in summer.
Sunset to Sunrise Sunset Point <i>Easiest Walk</i>	1.0 mi 1.6 km 1 hour	34 feet / 10 meters	Paved portion of Rim Trail; easiest hike in the park with views of the scenic Bryce Amphitheater. 0.5 mi each way.
Rim Trail Walk the rim of the scenic Bryce Amphitheater (not a loop)	1.0-11.0 mi 1.6-17.7 km 1-7.5 hours	1177 feet / 359 meters	Connects one-way from Bryce Point to Fairyland Point. View the hoodoos from above. Trail paved between Sunrise and Sunset Points.
Bristlecone Loop Rainbow Point or Yovimpa Point	1.0 mi 1.6 km 1 hour	200 feet / 61 meters	Hike through sub-alpine fir forests with bristlecone pines and expansive vistas. Pair with the 18-mile scenic drive.
Queen's Garden Sunrise Point (not a loop)	1.8 mi 2.9 km 1-2 hours	357 feet / 109 meters	The least difficult trail descending into Bryce Amphitheater. Down-and-back hike to Queen Victoria hoodoo.
Navajo Loop Sunset Point <i>Only a loop in summer</i>	1.3 mi 2.2 km 1-2 hours	550 feet / 168 meters	See Thor's Hammer along Two Bridges and Wall Street sides of this loop. Wall St only open in summer. <i>Clockwise direction recommended.</i>
Queen's/Navajo Combination Loop Sunset / Sunrise Point <i>Most Popular Trail!</i>	2.9 mi 4.6 km 2-3 hours	600 feet / 183 meters	Combine Queen's Garden & Navajo Loop to form a 2.9-mile loop. <i>Clockwise direction recommended; use Two Bridges in winter.</i>
Tower Bridge North of Sunrise Point (Portion of Fairyland Loop, not a loop)	3.0 mi 4.8 km 2-3 hours	802 feet / 245 meters	See Bristlecone pines and the Chinese Wall. Down-and-back hike to a shady 1/4-mile spur trail leading to the bridge.
Hat Shop Bryce Point (not a loop)	4.0 mi 6.4 km 3-4 hours	1075 feet / 328 meters	Descend the expansive Under-the-Rim Trail on a down-and-back hike to see a cluster of balanced-rock hoodoos.
Sheep Creek/ Swamp Canyon Swamp Canyon Loop	4.0 mi 6.4 km 3-4 hours	647 feet / 198 meters	A beautiful hike through a section of the park's quiet backcountry. Less signed than Bryce Amphitheater trails.
Fairyland Loop Fairyland Point or north of Sunrise Point	8.0 mi 12.9 km 4-5 hours	1716 feet / 523 meters	Combine hiking along the plateau rim near Boat Mesa with long views of the Bryce Amphitheater surrounded by unique hoodoos on this quiet hike.
Peekaboo Loop Bryce Point	5.5 mi 8.8 km 3-4 hours	1571 feet / 479 meters	Steep, ever-changing hike spent entirely below the rim. See the Wall of Windows. <i>Clockwise direction in summer</i>
Navajo / Peekaboo Combination Loop Sunset Point	4.9 mi 7.8 km 3-4 hours	1581 feet / 482 meters	Combine the Navajo Loop and Peekaboo Loop Trails into a mini Figure-8 Combination. Use Two Bridges both ways in winter.
The Figure-8 Combination Sunrise / Sunset Point	6.4 mi 10.2 km 4-5 hours	1631 feet / 497 meters	Combine the Queen's/Navajo Combination and Peekaboo Loop into one ultimate hike! Creates a Figure-8 shape.
Bryce Amphitheater Traverse Bryce Point	4.7 mi 7.5 km 3-4 hours	1010 feet / 308 meters	Descend From Bryce Point, turn left (clockwise) on Peekaboo Loop, connect to Queen's Garden and Ascend to Sunrise Point. Use shuttle or 2.7 mi Rim return.

Shuttle System

April through October

FREE BRYCE AMPHITHEATER SHUTTLE
See your park without having to park. Board at the Shuttle Station, Visitor Center (park in additional parking lot across the street), campground or lodging area. Create unique one-way hikes, and connect viewpoints together by walking along the Rim Trail. **Shuttles arrive every 10-15 minutes.**

RAINBOW BUS TOUR
A free twice-daily (9 a.m. and 1:30 p.m.) tour along the 18-mile scenic drive and overlooks along the way. Reservations can be made up to 48 hrs in advance by calling the shuttle station. Approximately 3 hours long. **Shuttle Station: (435) 834-5290**



"I Hiked the Hoodoos"

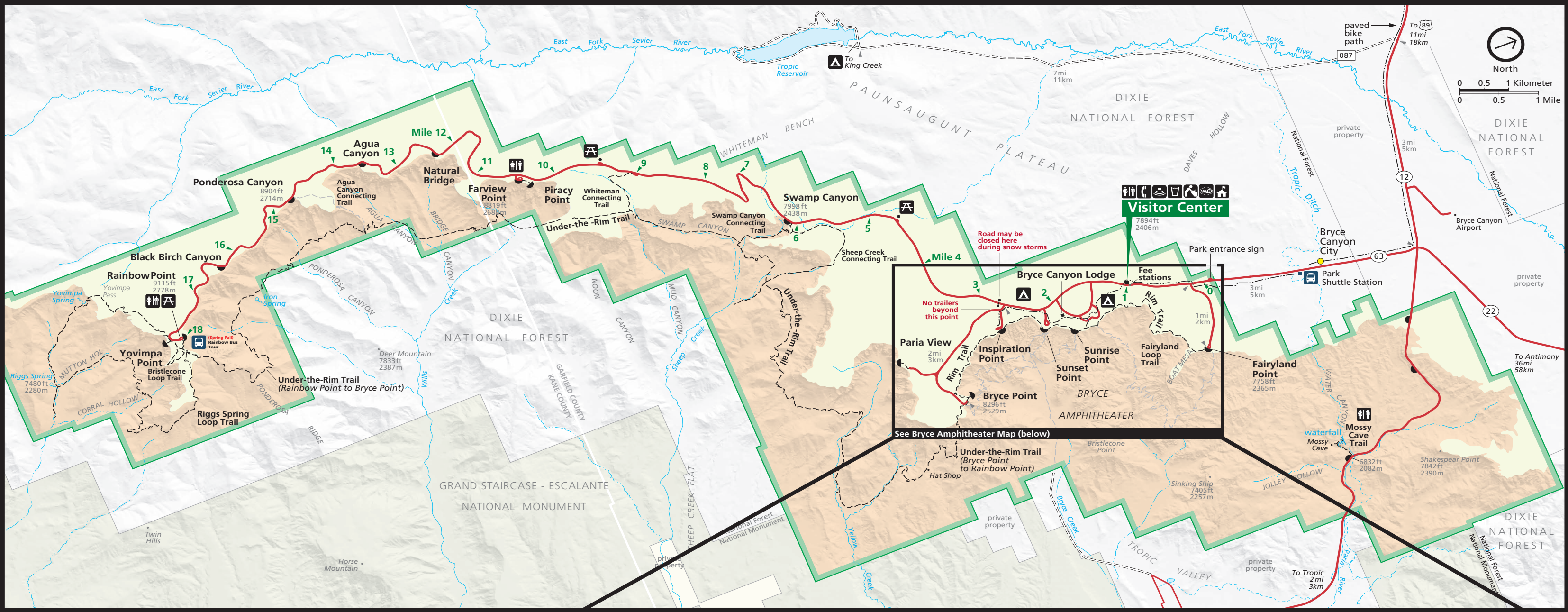
Hiking is great exercise and Bryce Canyon's "I Hiked the Hoodoos!" program is not just hiking, it's also a scavenger hunt!

- In order to qualify for the reward, hike a minimum of 3.0 miles, or find at least 3 benchmarks and complete steps 2 through 4 below.
- Each individual must have either a pencil rubbing of the benchmark (see Jr. Ranger Book) or a "selfie" with the benchmark.
- Only special "I Hiked the Hoodoos" benchmarks qualify for the reward. USGS benchmarks found at various locations within the park do not qualify.
- Rewards are available at the Visitor Center, so bring your photos or pencil rubbings to the front desk!

Benchmark	Distance miles	km
Mossy Cave	0.8	1.3
Rim Trail	2.5	4.0
Tower Bridge	3.0	4.8
Queen's Garden	1.8	2.9
Navajo Loop	1.3	2.2
Peekaboo Loop	2.4	3.9
Wall of Windows	1.6	2.6
Sheep Creek	4.0	6.4
Bristlecone Loop	1.0	1.6



Bryce Canyon Map and Guide



Scenic Areas

Begin by reading section "Plan Your Visit" on reverse page

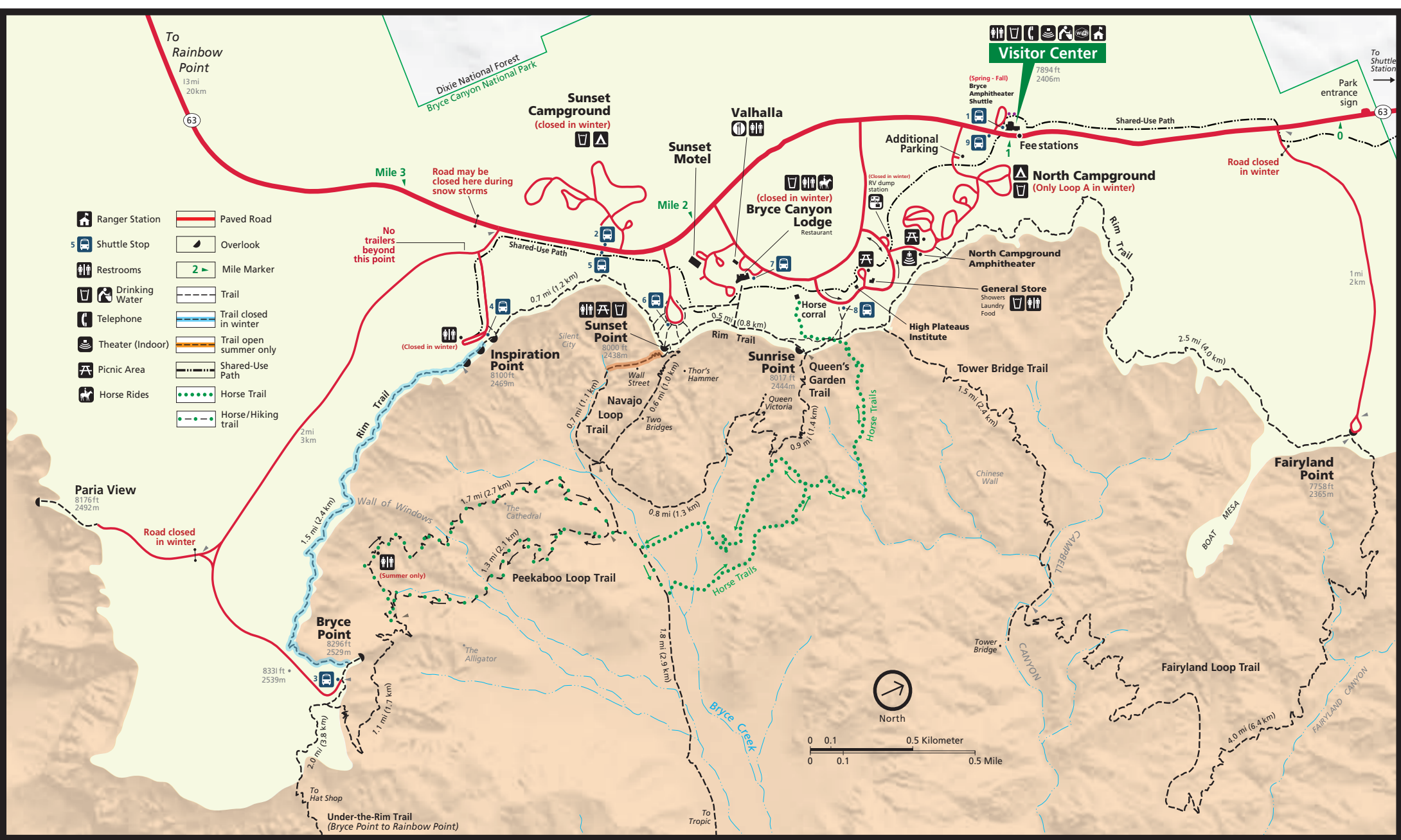
Rainbow Point
Mile 18

Bryce Amphitheater
Miles 1-3

Natural Bridge
Mile 12.5

Mossy Cave
4 miles east on Hwy 12

Bryce Amphitheater (Enlarged)



Enjoy Your Park Responsibly



NO DRONES
Unmanned aircraft is restricted from use in all national parks, including Bryce Canyon National Park. Violators are subject to legal action and fines in accordance with 36 CFR 1.5. Report drone use to nearest park ranger.



LIGHTNING
If you hear thunder, a storm is within 10 miles and a direct strike is possible. The plateau rim is the most dangerous place. Move to a building or vehicle, avoiding trees, hoodoos, and other tall objects. Lightning has claimed 4 lives and injured 6 in the past 24 years at Bryce Canyon.



INJURIES
Ankle injuries from improper footwear, dehydration, falling from off-limits areas, and altitude-related illnesses are the most common emergencies. Explore within your abilities, and don't ruin your vacation with a trip to the hospital!



PETS
Pets are only allowed on paved areas, including park viewpoints, the Shared-Use Bike Path, the Rim Trail between Sunset and Sunrise Points, as well as park campgrounds. Pets must always be leashed, and cleaned up after.

Drink at least 1 liter of water for every two hours you plan to hike.

Pets are not allowed on hiking trails.



EMERGENCY: 800-582-4351 or 9-1-1
NEAREST MEDICAL FACILITY: Garfield Hospital and Clinic is located in Panguitch, UT. Return to Highway 12 and head West 13.6 mi to US-89 N. Travel 6.5 mi to Panguitch and turn right on N 400 E St. **Hospital:** 435-676-8811

Plan Your Visit

Welcome to Bryce Canyon, home to the largest collection of hoodoos (irregularly-eroded rock spires) in the world! Situated along the east edge of a plateau, the park has one main 18-mile north-to-south road and only one entrance/exit. As you enter the park, all viewpoints and hikes are on the left.



BRYCE AMPHITHEATER (First three miles of the park)
The most iconic and popular views of Bryce Canyon are found along the rim of the Bryce Amphitheater: **Bryce, Inspiration, Sunset, and Sunrise Points**. Try to see this area as *early in the day as possible*. Enjoy a flat, paved walk between Sunset and Sunrise Points (0.5 mi each way) or a more challenging hike below the rim. Most visitors like to begin with the wonderful diversity found along the **2.9-mile Queen's/Navajo Combination Loop** (Hiking Guide on reverse page).



SCENIC DRIVE (Entire length of main park road)
Drive the main road 18 miles (35 min) until it ends at the park's highest elevations at Rainbow and Yovimpa Points. Consider the 1-mile Bristlecone Loop to stretch your legs. Stop at viewpoints like Natural Bridge and Agua Canyon on your return trip north. *Often enjoyed later in the day, or during busy times.*

Ranger Programs and Activities



RANGER PROGRAMS

Ranger talks and walks are provided every day. Join us for an exploration of how hoodoos happen at a Geology Talk, or explore the many sides of Bryce along a guided ranger walk. All ranger programs are free, and require no reservations. Outdoor programs are weather dependent and may be cancelled due to inclement weather. See schedule in the Visitor Center or by visiting our website at: www.nps.gov/bcrca/planyourvisit/calendar.htm



EVENING AND ASTRONOMY PROGRAMS

Join a ranger after dark exploring a wide-range of topics. Astronomy Programs are typically followed by night-sky viewing, weather dependent. See schedule in the Visitor Center or at www.nps.gov/bcrca/planyourvisit/calendar.htm



FULL MOON HIKES

In the winter, a full moon hike is offered the night of the full moon. In summer an additional hike is often held the night prior. Hikes are by lottery only. See ranger schedule for lottery times and locations. All members of the group must be present at the lottery and bring the footwear they plan to wear. Untreaded soles, such as tennis shoes, are not permitted on this hike.



SNOWSHOEING AND X-COUNTRY SKIING

Snowshoe programs are offered when snowpack and staffing allow. On days the program is offered, it is typically substituted for the Rim Walk. Hikes are typically 1.5 miles, lasting no more than 2 hours. See ranger schedule for times and locations. Cross-country skiing is permitted in all areas of the park except trails beneath the rim. Obtain a map of groomed and ungroomed trails at the Visitor Center.



BECOME A JUNIOR RANGER

Enjoy the wonders of Bryce Canyon National Park while learning what makes it unique through programs and activities. This is a special opportunity to earn a special badge that cannot be purchased or otherwise obtained except through this program. Visitors of all ages are welcome to participate. Please allocate 3-6 hours of your visit to this experience. See Visitor Center for materials and instructions on completing the Jr. Ranger booklet (a great activity to pair with our Hike the Hoodoos program!) Family programs are often offered in the summer season. See schedule in the Visitor Center or by visiting our website at: www.nps.gov/bcrca/planyourvisit/calendar.htm



GEOLOGY FESTIVAL

Every July, the park hosts a festival dedicated to the science of its defining feature. Join park rangers for guided hikes, geology programs, bus tours, evening programs with special guest speakers, exhibits, and more! www.nps.gov/bcrca/planyourvisit/annual-geology-festival.htm



ASTRONOMY FESTIVAL

Explore your world and beyond through one of Bryce Canyon National Park's most precious resources: its night sky. Each June, the Astronomy Festival features renowned guest speakers, telescope fields, ranger programs, night sky tours, and many activities the entire family will love. More information at: www.nps.gov/bcrca/planyourvisit/astrofest.htm

Recreation



BICYCLING

Bicycles are restricted to paved surfaces, campground roads, and the Shared-Use Path (see map). Bicycles are not permitted on any hiking trail. The Dixie National Forest has a paved bicycle path traveling over 17 miles through Red Canyon to connect to the park path, along with many miles of mountain bike trails within Red Canyon.



VIEWING NATURE

Species lists for flora and fauna may be obtained at the Visitor Center, and we welcome you to share what you see during your time in the park. Citizen Science apps such as eBird and iNaturalist are excellent ways to help track Bryce wildlife, too. **Only view roadside wildlife from paved pull-offs. Never approach or feed wildlife.**



BACKCOUNTRY

Areas include the 9-mile Riggs Spring Loop, and the 23-mile Under-the-Rim Trail. Fees are \$5/person. Backcountry permits are issued on a first-come, first-served basis at the Visitor Center up to 48-hours in advance. Sites limited to 6 per night. 2 group sites available with a limit of 15 per night. Maps available at the Visitor Center and park website.



NIGHT SKIES

Bryce Canyon is one of the darkest places in North America accessible by improved roads. Even when we're not hosting an astronomy program, we invite you to enjoy the night sky. All viewpoints present a unique view of the vastness above. Remember to always carry a flashlight (smartphone lights are inadequate) and walk carefully.



HORSEBACK RIDING

Wrangler-led rail rides are provided within the park Spring-Fall and range \$65 to \$90 dollars for 1.5 to 3 hr rides. Inquire at the Bryce Canyon Lodge or call 435-834-5500. The use of privately-owned stock is permitted. Please e-mail us or call 435-834-4736 at least 72 hours in advance to schedule a reservation inspection for your stock.



HIKING

Bryce Canyon has approximately 60 miles of trails to explore, and every single one will show you a unique side of this park. Refer to the Hiking Guide on the opposite page. By using the mileages listed on the map provided, one can create a wide variety of unique hikes. **Remember appropriate footwear and water.**

Bryce Canyon Natural History Association



Supporting Bryce Canyon since 1961

The Bryce Canyon Natural History Association (BCNHA) supports education, research, infrastructure, and unique programs of all kinds for the benefit of Bryce Canyon National Park. Combined with sales from our bookstores, BCNHA members has provided **over \$7 million** dollars of support to this unique natural resource and the experience of its visitors.

Consider becoming a dedicated friend of Bryce Canyon National Park today!

What Members mean to this Park...

By becoming a member of the BCNHA you'll receive a 15% discount in BCNHA stores, a one-time free gift, and discounts at most cooperating association bookstores in national parks and public lands across the country.

Your tax-deductible dues will then directly support beloved programs in the park.

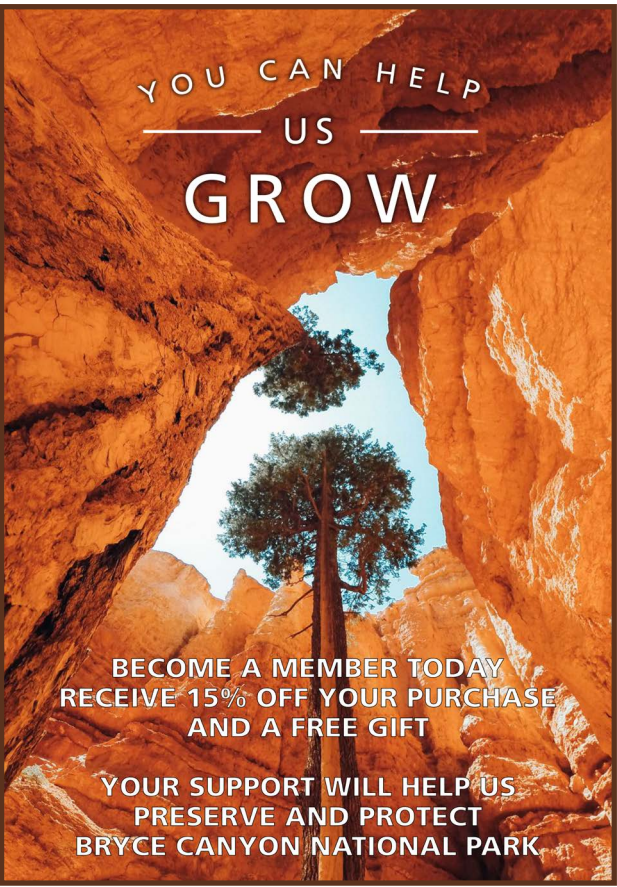
Visit our website or the Visitor Center bookstore to see how you can help support:

- The Junior Ranger Program
- This newspaper and other free publications
- The Geology Festival, Astronomy Festival and other special events and interpretive programs
- A full-time Education Outreach Specialist and the Geo-Scientist-in-Park internship program
- Public geology programs and internships each summer
- Research and Training for park staff on the geology of the Colorado Plateau

The Lodge at Bryce Canyon and Ruby's Inn have implemented a \$1 Donation Program:

Hotel guests can donate a dollar to the park each night of their visit. Since 2004 **over \$800,000** has been contributed to fund seasonal employees and projects.

Visit Us and Shop Online: www.brycecanyon.org or call at 888-362-2642



Purchases from the Visitor Center bookstore directly support the park

Services

For additional services such as food, lodging, and more in the local area visit www.brycecanyoncountry.com



ACCESSIBILITY

Restrooms, Visitor Center, Bryce Canyon Lodge, Valhalla, and General Store are fully accessible when open. As are most viewpoints.

- The ½-mile section of Rim Trail between Sunset and Sunrise Points is paved and fairly level.
- **Free Access Guide at Visitor Center**



LODGING

The Lodge at Bryce Canyon is open Spring-Fall. Winter lodging is available at the Sunset Motel. Reservations can be made by calling (435) 834-8700 or visiting brycecanyonforever.com.



MONEY

An ATM is available at the Lodge at Bryce Canyon and at Ruby's Inn General Store, two miles north of the park entrance.



RESTAURANTS

Spring - Fall, the Lodge at Bryce Canyon offers breakfast through dinner. The General Store offers basic groceries, snacks, and refreshments. Valhalla offers pizza, coffee, and a basic menu.



CAMPGROUNDS

Two campgrounds, North and Sunset, provide first-come-first serve sites; RVs (\$30/night, no hook-ups) and tents (\$20/night). Holders of the Senior and Access Pass receive 50% discounts. A limited number of reservable sites can be found on recreation.gov. In winter Loop A of North CG is open.



GIFT SHOPS AND PENNY MACHINES

Located within the park at the Visitor Center Natural History Association Bookstore and the Lodge at Bryce Canyon. Penny machines found at the General Store and Ruby's Inn General Store.



PICNIC AND GRILL AREAS

Available at Sunset Point, N. Campground (with grills), General Store, mile 4.5, Whiteman Bench, and Yovimpa Point.



LAUNDRY

Available Spring-Fall at the General Store. Winter facilities at Ruby's Inn.



RESTROOMS

Available at the Visitor Center, N. Campground, Mossy Cave, Sunset, Farview, Rainbow Points. In summer at Inspiration Point, Peekaboo Loop.



POST OFFICE

Dropbox mailbox is located at the Visitor Center. Post Office at Ruby's Inn is open Mon to Sat. Stamps available at the Visitor Center.



SHOWERS

Showers are available Spring-Fall at the General Store. Winter facilities at Ruby's Inn.



WIFI

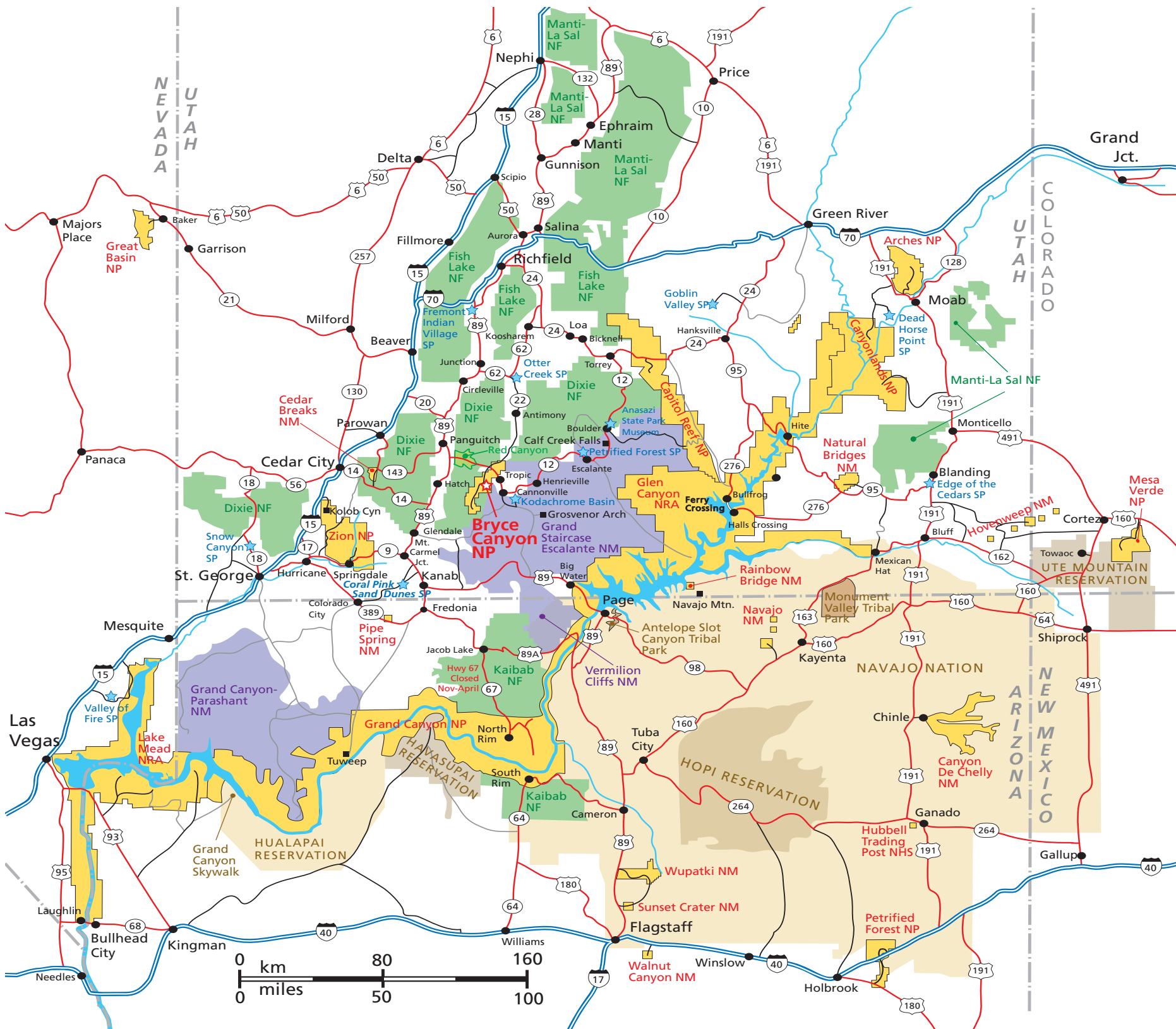
Public WIFI connection available at the Visitor Center.



FIREWOOD

Available at the General Store and Ruby's Inn General Store. Collecting firewood in the park is not permitted.

Regional Map



ROAD CONDITIONS

Current Utah Road Conditions: utahcommuterlink.com
Call or visit Parks or Agencies below for most up-to-date conditions of unpaved routes.

AVERAGE DRIVE TIMES (HOURS)

Arches NP (via US 89 & I-70) 4 ½
Arches NP (via UT-12) 5
Capitol Reef NP (via UT-12) 2 ½
Canyonlands (N Ent. 89 & 70) 4 ½

Cedar Breaks NM (via 12 & 43) 1 ¼
Cedar City 1 ½
Escalante 1
Grand Canyon NP (North Rim) 3
Grand Canyon NP (South Rim) 5
Page, AZ 3
Las Vegas 4
Salt Lake City 4 ½
Zion NP (East Entrance) 1 ½
Zion NP (West Entrance) 2 ½

Connect with Your Park

SUPERINTENDENT

Linda Mazzu

MAILING ADDRESS

PO Box 640201
Bryce, UT 84764-0201

PARK INFORMATION

435-834-5322

WEBSITE

www.nps.gov/bcrca

SOCIAL MEDIA

www.facebook.com/brycecanyonnps
www.instagram.com/brycecanyonnps_gov
www.twitter.com/brycecanyonnps
www.youtube.com/brycecanyonnps

E-MAIL (LOST AND FOUND)

bcrca_information@nps.gov

EMERGENCIES

435-582-4351 or 9-1-1

REPORTING FIRES

Locate a park ranger to report fires. Observed fires are often controlled burns. **Wildland Fire Reporting: 435-865-4611**

LEAVE A COMMENT

We want to hear how our staff, facilities, and partners contributed to your experience. Comment forms are available at the front desk at the Visitor Center. Alternatively, send us an e-mail, find us on social media, or call.



BECOME A VOLUNTEER

Volunteers work with park employees to preserve park resources, play a vital role in educating and engaging our visitors, and get to live in one of the world's most beautiful environments. Call the park at 435-834-5322 or e-mail bcrca_information@nps.gov



WORK WITH THE NATIONAL PARK SERVICE

The National Park Service doesn't just hire rangers. We employ mechanics, museum curators, data analysts, landscape architects, engineers, educators, law enforcement and more. All job vacancies are posted on USAJobs.gov



YOUR FEE DOLLARS AT WORK

Learn more about how Bryce Canyon and other parks use your fee dollars at: <https://www.nps.gov/aboutus/fees-at-work.htm>